

INSTRUCTIONS

Tree Cookie

Grades 1-3

- Show students a tree cookie and explain how it was obtained from a tree. Let them feel or examine it.
- Explain what the rings represent (age of the tree, years of rapid or slow growth). Show them how to count the rings to determine the trees age.
- Demonstrate how you can use a white paper plate to create a “tree cookie” using the bumpy edges as bark, the smooth inside as the cambium, and the inner circle as the heartwood.
- Pass out paper plates; have the students a tree cookie the same age as themselves. Have them identify when important events in their lives took place, such as when they were born, when they started school, etc...

Reading Tree Cookies

Tree Cookie Parts

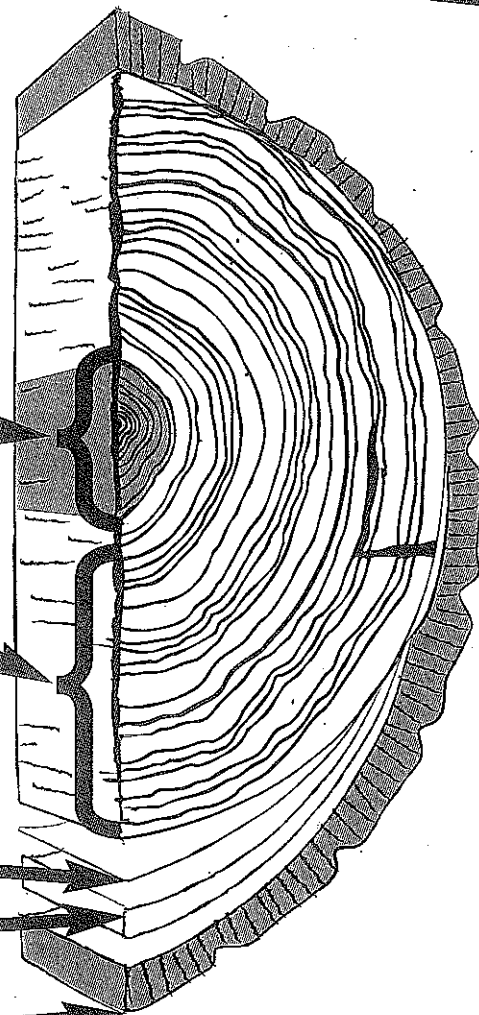
1. _____

2. _____

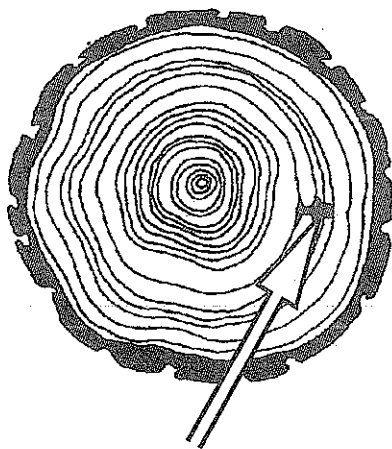
3. _____

4. _____

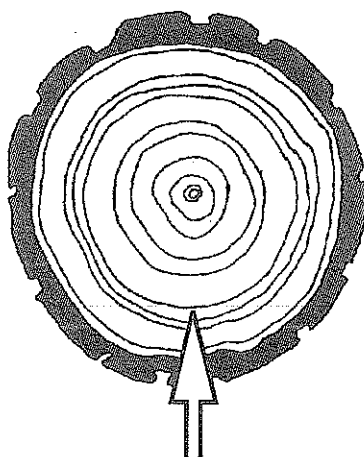
5. _____



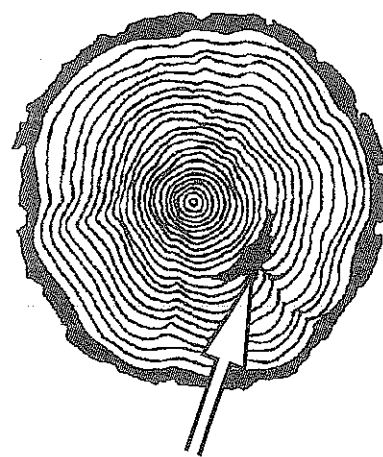
Cookie Clues: What happened to the tree where the arrow is?



6. _____



7. _____



8. _____